

© Yueqing AIBEIKEN Electric Co., Ltd. All rights reserved.

Disclaimer: The appearance, colour and parameters of the products listed in this catalogue are for reference only, whichever is issued by AIBEIKEN. AIBEIKEN Electric reserves the right to modify or cancel the relevant parameters of this catalogue without prior notice. If you have any questions, please contact your sales representative.



埃贝肯电气
AIBEIKEN ELECTRIC

YUEQING 以精立业，以质取胜
Build a business with excellence and win with quality.

AIBEIKEN ELECTRIC

产品选型手册
Product selection guide

埃
贝
肯



YUEQING AIBEIKEN ELECTRIC CO., LTD.

Add: 198-208 Station Road, Liushi Town, Yueqing City, Zhejiang, China
Tel: 0086-577-61776977 Tel: 0086-577-61776877
E-mail: abbeycon@cnvcb.com
Web: www.abbeycon.com



乐清埃贝肯电气有限公司
YUEQING AIBEIKEN ELECTRIC CO.,LTD.

COMPANY PROFILE www.abbeycon.com

Yueqing Aibeiken, headquartered in Wenzhou, China, has been delivering quality electromechanical switches and power sockets& chargers to the telecom, high tech, medical, electronics, instrumentation, industrial, audio/visual, appliance and consumer markets since 2014. With international offices in USA and Hong Kong, Aibeiken's global reach includes North America, Europe, Asia and Latin America.

Products include anti-vandal push button switch, rocker switch, power sockets&Chargers, Battery holders and so on. Aibeiken has a broad sales network including regional sales managers, local representatives and a vast distribution network ready to service your needs. We focus our efforts on providing a broad selection of switches, outstanding customer service and speedy response time, Selection, Service, Speed.

Engineers and sales professionals are on hand to provide specifying assistance and quick response to 3D drawing requests, price quotes, inventory, and access to a significant sample program that allows engineers to examine and qualify switches for their end product applications.

Aibeiken's online presence (www.abbeycon.com) includes a complete product catalog, detailed specification documents, product schematics and 3D drawings. Product modification and customization expertise is available and can be applied to many of our product lines and switch series.

AIBEIKEN BUTTON, LIGHT YOU AND ME

CONTENT

	一号电池盒/UM-1 Battery Holder (D)	01-02
	二号电池盒/UM-2 Battery Holder (C)	02-03
	五号电池盒/UM-3 Battery Holder (AA)	03-05
	七号电池盒/UM-4 Battery Holder (AAA)	06
	9V电池盒/6F22 Battery Holder	07
	18650锂电池盒/18650 Lithium-ion Battery Holder	07-08
	26650锂电池盒/26650 Lithium-ion Battery Holder	09
	新款电池盒/New Products	09
	14250 (1/2AA) 电池盒/14250 (1/2AA) Battery Holder	10
	123A (2/3A) 电池盒/123A (2/3A) Battery Holder	11
	安全电池盒/Safety Battery Holder	12
	纽扣电池座/Coin Cell Holder	13-14
	五金弹片/Contacts	15-16

电池盒型号标示如下

THE MARK OF BATTERY HOLDER PART NUMBER

型号描述: IBH3N-21-2P

IBH	3	N	-2	1	-2	P
AIBEIKEN CODE	Battery type	Serial No	Pitch number	Series	Mould NO	Terminal
	1: D:UM-1 1号	A B C D				W:with lead wires 150mm
	2: C:UM-2 2号		B:with snap terminal			
	3: AA:UM-3 5号		L:with solder lug			
	4: AAA:UM-4 7号		P:with pin(pcb mounted)			
	9V: 9V:6F22		S:with switch			
						T:SMT
						D:DIY
						N:THM



BH1-11(W/L)
FOR ONE "D" CELL



69(L)x37(W)x27(H)
BH1-25(W/L)
FOR TWO "D" CELLS



130(L)x37(W)x28(H)
BH1-41(W/L)
FOR FOUR "D" CELLS



130(L)x74(W)x29(H)
BH1-43-2(W/L)
FOR FOUR "D" CELLS



142(L)x73(W)x31(H)
BH1-46
FOR FOUR "D" CELLS



116.5(L)x65(W)x65(H)

BH1-21-1(W/B/L)
FOR TWO "D" CELLS



71(L)x73(W)x31(H)
BH1-31(W/B/L)
FOR THREE "D" CELLS



106(L)x70(W)x28(H)
BH1-42(W/B/L)
FOR FOUR "D" CELLS



134(L)x74(W)x31(H)
BH1-44(W/B/L)
FOR FOUR "D" CELLS

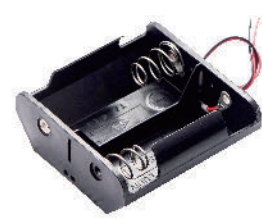


71(L)x73(W)x62(H)
BH1-61(W/B/L)
FOR SIX "D" CELLS



105(L)x70(W)x56(H)

BH1-21-2(W/B/L)
FOR TWO "D" CELLS



71(L)x71(W)x31(H)
BH1-32(W/L)
FOR THREE "D" CELLS



192(L)x37(W)x31(H)
BH1-43(W/L)
FOR FOUR "D" CELLS



141(L)x73(W)x31(H)
BH1-45(W/L)
FOR FOUR "D" CELLS



256(L)x37(W)x31(H)
BH1-62(W/B/L)
FOR SIX "D" CELLS



195(L)x74(W)x33(H)

BH1-63(W/B/L)
FOR SIX "D" CELLS



134(L)x106(W)x28(H)
BH1-83(W/B/L)
FOR EIGHT "D" CELLS



257(L)x73(W)x33(H)



BH2-11(W/L)
FOR ONE "C" CELL



58(L)x29(W)x24(H)
BH2-31(W/L/P)
FOR THREE "C" CELLS



160(L)x30(W)x27(H)

BH1-81(W/B/L)
FOR EIGHT "D" CELLS



142(L)x73(W)x63(H)
BH1-84(W/B/L)
FOR EIGHT "D" CELLS



257(L)x73(W)x29(H)



BH2-21(W/B/L)
FOR TWO "C" CELLS



63(L)x56(W)x23(H)
BH2-32(W/B/L)
FOR THREE "C" CELLS



82(L)x59(W)x24(H)

BH1-82(W/B/L)
FOR EIGHT "D" CELLS



134(L)x74(W)x63(H)



BH2-25(W/L)
FOR TWO "C" CELLS



108(L)x29(W)x23(H)
BH2-41(W/L)
FOR THREE "C" CELLS



210(L)x30(W)x26(H)



BH2-42(W/B/L)
 FOR FOUR "C" CELLS



108(L)x54(W) x 26(H)

BH2-61(W/B/L)
 FOR SIX "C" CELLS



159(L)x57(W)x25(H)

BH2-43(W/B/L)
 FOR FOUR "C" CELLS



106(L)x59(W) x 22(H)

BH2-62(W/B/L)
 FOR SIX "C" CELLS



82(L)x59(W)x49(H)

BH2-44(W/B/L)
 FOR FOUR "C" CELLS



61(L)x55(W)x42(H)

BH3-11-1(P)
 FOR ONE "AA" CELL



60(L)x16.5(W)x15(H)

BH3-21-1(W/B/L/P)
 FOR TWO "AA" CELLS



59(L)x33(W)x15(H)

BH3-11-2(W/L/P)
 FOR ONE "AA" CELL



57(L)x17(W)x14(H)

BH3-21-2(W/B/L/P/S)
 FOR TWO "AA" CELLS



57(L)x32(W)x16(H)

BH3-11-3(W/L/P)
 FOR ONE "AA" or "14505" CELL



61(L)x17(W)x15(H)

BH3-21-2E(W/B/L/P/S)
 FOR TWO "AA" CELLS



79(L)x32(W)x16(H)

BH3-22(W/B/L)
 FOR TWO "AA" CELLS



58(L)x26(W)x17(H)

BH3-31(W/B/L/P)
 FOR THREE "AA" CELLS



58(L)x49(W)x17(H)

BH3-41-2(W/B/L/P)
 FOR FOUR "AA" CELLS



58(L)x64(W)x16(H)

BH3-43-1(W/B/L)
 FOR FOUR "AA" CELLS



57(L)x30(W)x27(H)

BH3-44-1(W/B/L/P)
 FOR FOUR "AA" CELLS



109(L)x32(W)x16(H)

BH3-24(W/L)
 FOR TWO "AA" CELLS



57(L)x26(W)x15(H)

BH3-33(W/L/P)
 FOR THREE "AA" CELLS



158(L)x17(W)x14(H)

BH3-41-3(W/L/P)
 FOR FOUR "AA" CELLS



58(L)x64(W)x16(H)

BH3-43-2(W/B/L)
 FOR FOUR "AA" CELLS



58(L)x31(W)x28(H)

BH3-44-2(W/B/L)
 FOR FOUR "AA" CELLS



VOLT:3V DC
 109(L)x32(W)x16(H)

BH3-25(W/L/P)
 FOR TWO "AA" CELLS



109(L)x17(W)x14(H)

BH3-41(W/B/L/P)
 FOR FOUR "AA" CELLS



58(L)x64(W)x16(H)

BH3-42(W/B/L)
 FOR FOUR "AA" CELLS



109(L)x17(W)x26(H)

BH3-43-3(W/B/L)
 FOR FOUR "AA" CELLS



VOLT:3V DC
 57(L)x30(W)x27(H)

BH3-51(W/B/L/P)
 FOR FIVE "AA" CELLS



79(L)x59(W)x17(H)



五号电池盒/UM-3or "AA" SIZE
YUEQING AIBEIKEN ELECTRIC CO.,LTD.



七号电池盒/UM-4or "AAA" SIZE
YUEQING AIBEIKEN ELECTRIC CO.,LTD.

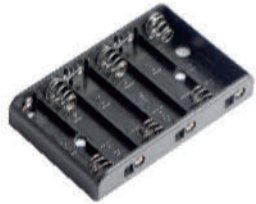


BH3-61(W/B/L)
FOR SIX "AA" CELLS



111(L)x48(W)x17(H)

BH3-64(W/L)
FOR SIX "AA" CELLS



91(L)x57(W)x16(H)

BH3-81-1(W/B/L)
FOR EIGHT "AA" CELLS



121(L)x59(W)x16(H)

BH3-83(W/B/L)
FOR EIGHT "AA" CELLS



58(L)x63(W)x28(H)

BH3-62(W/B/L/P)
FOR SIX "AA" CELLS



157(L)x32(W)x16(H)

BH3-64G(W/L)
FOR SIX "AA" CELLS



VOLT:4.5V DC

91(L)x57(W)x16(H)

BH3-81-2(W/B/L)
FOR EIGHT "AA" CELLS



171(L)x59(W)x16(H)

BH3-101(W/L)
FOR TEN "AA" CELLS



152(L)x57(W)x16(H)

BH3-63(W/B/L)
FOR SIX "AA" CELLS



58(L)x45(W)x28(H)

BH3-66(W/B/L)
FOR SIX "AA" CELLS



158(L)x17(W)x26(H)

BH3-82(W/B/L)
FOR EIGHT "AA" CELLS



108(L)x31(W)x29(H)

BH3-103(W/B/L)
FOR TEN "AA" CELLS



79(L)x59(W)x30(H)

BH4-11(W/L/P)
FOR ONE "AAA" CELL



50(L)x13(W)x12(H)

BH4-21-3(W/B/L/P)
FOR TWO "AAA" CELLS



52(L)x25(W)x13(H)

BH4-31(W/B/L/P)
FOR THREE "AAA" CELLS



53(L)x38(W)x13(H)

BH4-21-1(W/B/L/P)
FOR TWO "AAA" CELLS



52(L)x25(W)x13(H)

BH4-22(W/L)
FOR TWO "AAA" CELLS



51(L)x24(W)x13(H)

BH4-43(W/B/L)
FOR FOUR "AAA" CELLS



53(L)x25(W)x24(H)

BH4-21-2(W/B/L/P)
FOR TWO "AAA" CELLS



53(L)x25(W)x13(H)

BH4-26(W/L/P)
FOR TWO "AAA" CELLS



95(L)x13(W)x12(H)

BH4-82(W/B/L)
FOR EIGHT "AAA" CELLS



97(L)x25(W)x24(H)





9V电池盒/UM-9V or "6F22
YUEQING AIBEIKEN ELECTRIC CO.,LTD.



18650锂电池盒/18650 LI-ION CELL
YUEQING AIBEIKEN ELECTRIC CO.,LTD.



BH9V-1(W/L/P)
FOR 9V CELL



54(L)x30(W)x20(H)

BH9V-4
FOR 9V CELL



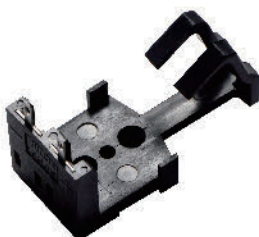
55(L)x30(W)x21.5(H)

BH9V-2
FOR 9V CELL



49(L)x29(W)x20(H)

BH9V-5
FOR 9V CELL



59(L)x30(W)x25(H)

BH9V-3(W/L/P)
FOR 9V CELL



54(L)x30(W)x20.7(H)x15.4

9V-PP3
FOR 9V CELL



58(L)x53(W)x29(H)

BH18A-8P
FOR FOUR "18650" CELLS



77.98(L)x79(W)x21.5(H)

BH18D-1D
FOR ONE "18650" CELL



77(L)x20.7(W)x15(H)

BH18D-2D
FOR TWO "18650" CELLS



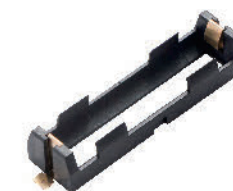
77(L)x40(W)x15(H)

BH18B-2P(2针)
FOR ONE "18650" CELL



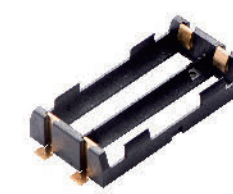
77.7(L)x20.9(W)x21.3(H)

BH18B-1T
FOR ONE "18650" CELL



77(L)x20.7(W)x15(H)

BH18D-2T
FOR TWO "18650" CELLS



77(L)x40(W)x15(H)

BH18C-2P
FOR ONE "18650" CELL



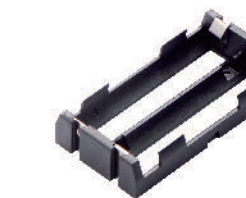
80(L)x21(W)x21.4(H)

BH18D-1N
FOR ONE "18650" CELL



80(L)x21(W)x21.4(H)

BH18D-2N(插针)
FOR TWO "18650" CELLS



77(L)x40(W)x15(H)



18650锂电池盒/18650 LI-ION CELL
YUEQING AIBEIKEN ELECTRIC CO.,LTD.

BH18-2P
FOR ONE "18650" CELL



77.7(L)x20.9(W)x21.3(H)

BH18A-4P
FOR TWO "18650" CELLS

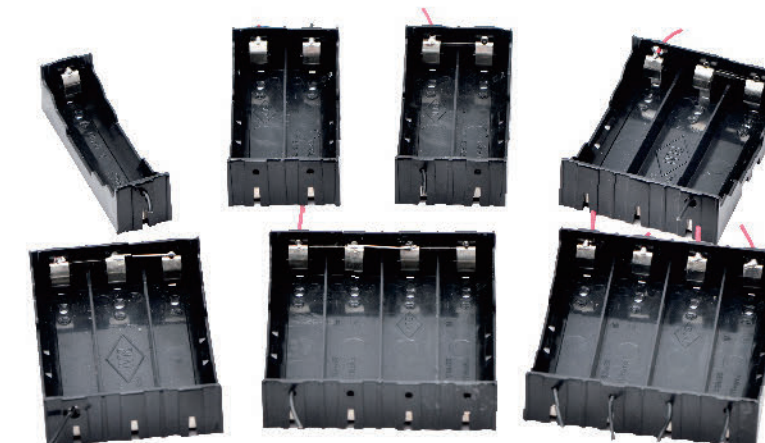


77.7(L)x40.2(W)x21.5(H)

BH18A-6P
FOR THREE "18650" CELLS



77.7(L)x59.7(W)x21.5(H)



串联

并联

DIY

一应俱全



26650锂电池盒/26650 LI-ION CELL

YUEQING AIBEIKEN ELECTRIC CO.,LTD.



BH26A-2P

FOR ONE "26650" CELL



82(L)x28.5(W)x29(H)

BH26A-2D

FOR TWO "26650" CELLS



77(L)x56(W)x18.5(H)

BH26A-2T

FOR TWO "26650" CELLS



77(L)x56(W)x18.5(H)



新款电池盒/New Products

YUEQING AIBEIKEN ELECTRIC CO.,LTD.

BH3N-21-1

FOR TWO "AA" CELLS



57.5(L)x32(W)x16(H)

BH3N-21-2

FOR TWO "AA" CELLS



60(L)x32(W)x16.7(H)

BH3N-31-1

FOR THREE "AA" CELLS



57.5(L)x47.6(W)x16.4(H)

BH3N-31-2

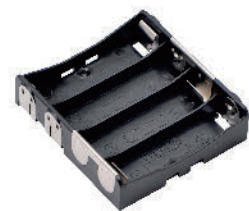
FOR THREE "AA" CELLS



60(L)x48(W)x16.7(H)

BH3N-41-1

FOR FOUR "D" CELLS



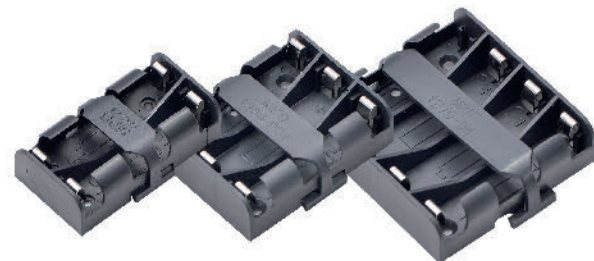
57.5(L)x63(W)x16(H)

BH3N-41-2

FOR FOUR "AA" CELLS



60(L)x64(W)x16.7(H)



14250 or 1/2AA电池盒

YUEQING AIBEIKEN ELECTRIC CO.,LTD.



BH14-11-1

FOR ONE "1/2AA" CELL



34(L)x18(W)x15(H)

BH14-11-3

FOR ONE "1/2AA" CELL



35(L)x22(W)x23(H)

BH14-11-6

FOR ONE "1/2AA" CELL



34.5(L)x15.5(W)x15(H)

BH14-11-2

FOR ONE "1/2AA" CELL



34(L)x16.5(W)x15(H)

BH14-11-4

FOR ONE "1/2AA" CELL



33(L)x16.5(W)x15(H)

BH14-12-6

FOR ONE "1/2AA" CELL



33(L)x16.5(W)x18(H)

BH14-11-2G

FOR ONE "1/2AA" CELL



38(L)x16.5(W)x19(H)

BH14-11-5

FOR ONE "1/2AA" CELL



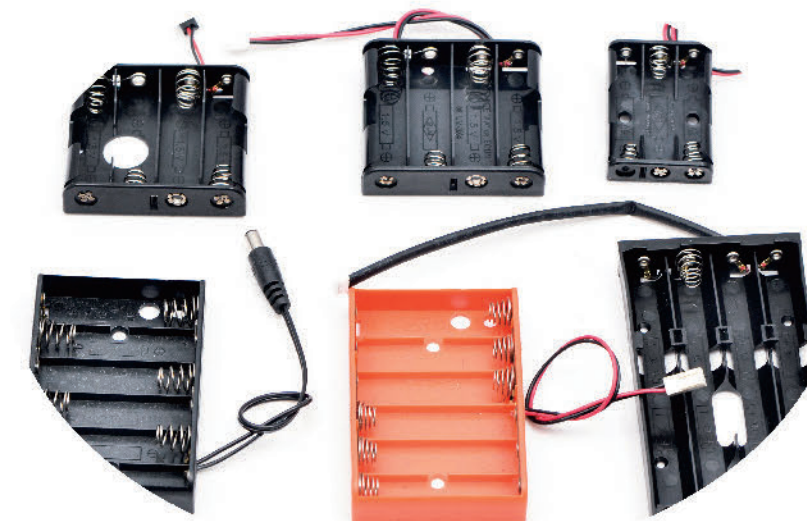
34.5(L)x16(W)x15(H)

BH14-13-6

FOR ONE "1/2AA" CELL

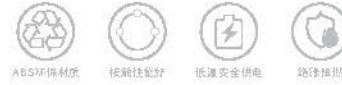


34.5(L)x15.5(W)x15(H)





123A or 2/3A 电池盒
YUEQING AIBEIKEN ELECTRIC CO.,LTD.



安全电池盒/Safety Battery Holder
YUEQING AIBEIKEN ELECTRIC CO.,LTD.



BH12-11-1
FOR ONE "123A" CELL



43(L)x18(W)x14(H)

BH12-11-3
FOR ONE "123A" CELL



43(L)x18.5(W)x15(H)

BH12-11-6
FOR ONE "123A" CELL



43(L)x18(W)x12(H)

BH12-11-8(KS1018)
FOR ONE "123A" CELL



43(L)x18(W)x15(H)

BH12-11-2
FOR ONE "123A" CELL



43(L)x18(W)x15(H)

BH12-11-4
FOR ONE "123A" CELL



42(L)x19(W)x19(H)

BH12-21-1
FOR TWO "123A" CELLS



42(L)x37(W)x15(H)

BH12-21-8(KS1080)
FOR TWO "123A" CELLS



43(L)x37(W)x15(H)

BH12-12-2
FOR ONE "123A" CELL



43(L)x18(W)x15(H)

BH12-11-5
FOR ONE "123A" CELL



41(L)x20(W)x16.8(H)

BH12-11-7
FOR ONE "123A" CELL



44(L)x20(W)x16.8(H)

BC1-21WS
FOR TWO "D" CELLS



83(L)x73(W)x39(H)

BC1-43
FOR FOUR "D" CELLS



143(L)x96(W)x39(H)

BC3-21WS
FOR TWO "AA" CELLS



67(L)x33(W)x19(H)

BC3-41USB
FOR FOUR "AA" CELLS



80(L)x63(W)x19(H)

BC3-81WS
FOR EIGHT "AA" CELLS



127(L)x70(W)x19(H)

BC1-31
FOR THREE "D" CELLS



108(L)x70(W)x39(H)

BC2-21WS
FOR TWO "C" CELLS



83(L)x57(W)x30(H)

BC3-31WS
FOR THREE "AA" CELLS



69(L)x48(W)x18(H)

BC3-61
FOR SIX "AA" CELLS



114(L)x66(W)x18(H)

BC3-83WS
FOR EIGHT "AA" CELLS



72(L)x65(W)x37(H)

BC1-31WS
FOR THREE "D" CELLS



127(L)x70(W)x39(H)

BC2-31
FOR THREE "C" CELLS



84(L)x58(W)x31(H)

BC3-41WS
FOR FOUR "AA" CELLS



69(L)x65(W)x19(H)

BC3-63WP
FOR SIX "AA" CELLS



88(L)x68(W)x37(H)

BC4-41
FOR FOUR "AAA" CELLS



69(L)x58(W)x14.5(H)



CH-1620-1
 FOR CR1620



CH-1632-1
 FOR CR1632



CH-1220-1
 FOR CR1220



CH-2032-5-4
 FOR CR2032



CH-2032-6
 FOR CR2032



CH-2032-6-2
 FOR CR2032



CH-1225-2
 FOR CR1225



CH-2016-8-1
 FOR CR2016



CH-2025-8-2
 FOR CR2025



CH-2032-8
 FOR CR2032



CH-2032-10
 FOR CR2032



CH-2032-12
 FOR CR2032



CH-2032-1
 FOR CR2032



CH-2032-2-1
 FOR CR2032



CH-2032-3-1
 FOR CR2032



CH-2CR2032-7
 FOR 2*CR2032



CH-2430-1
 FOR CR2430



CH-2430-2
 FOR CR2430



CH-2032-3
 FOR CR2032



CH-2032-4-1
 FOR CR2032



CH-2032-4-2
 FOR CR2032



CH-2430-2SMT
 FOR CR2430



CH-2450-1
 FOR CR2450



CH-2477-1
 FOR CR2477



CH-2032-5
 FOR CR2032



CH-2032-5-2
 FOR CR2032



CH-2032-5-3
 FOR CR2032



CH-2477-2
 FOR CR2477 CR2450



CH-AG13-21T
 FOR 2*AG13



CH-AG13-21P
 FOR 2*AG13



BC-315A



BC-315C



BC-308A



BC-308C



BC-304-3A



BC-304-3C



BC-331



BC-344-17



BC-308CC



BC-308AC



BC-305A



BC-309C



BC-BR-AG3V



BC-KS-5231



BC-HOOK



BC-142-3V



BC-SNAP



BC-CR123-CRO



BC-2/3-1-CRO



BC-CR0123-B



BC-34#Clip



BC-404A



BC-2402



BC-318L



BC-CR123A



BC-123A-T



BC-1-2AA



BC-0403



BC-224AC



BC-224CA



BC-307AA



BC-307CC



BC0401



BC-0301



BC-KS-53



BC-KS-54-18650



BC-307-2AC



BC-BK-913



9V Battery holder



Battery slot(cylindrical)



Battery storage box

